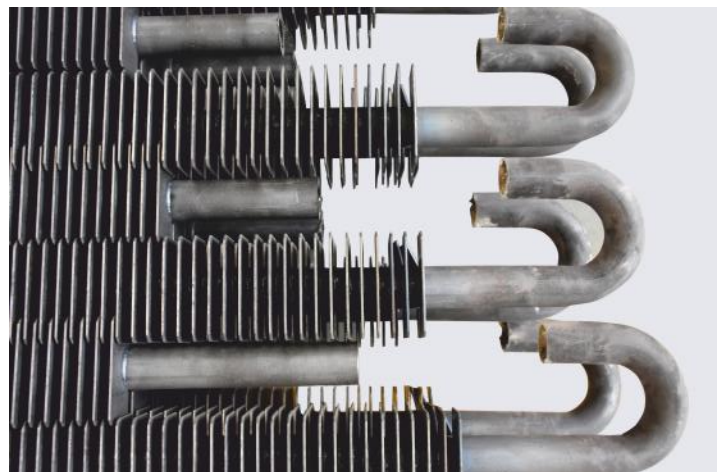


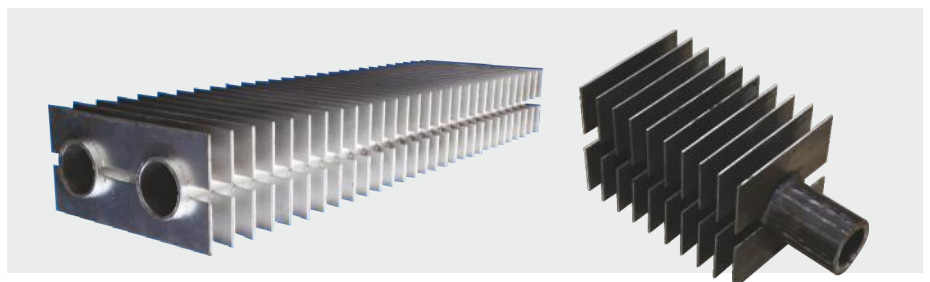
## 'H' & 'HH' TYPE FINNED TUBES

Specifications	
Type	H & HH, Resistance Welded Fins
Fin Sizes (mm)	As per Customer Specifications
Tube Sizes (mm)	25.4 OD - 50.8 OD
Fins Density (Fins / Meter)	90 max
Fin & Tube Material	Carbon Steel, Alloy Steel and Stainless Steel
Tube Length (m) (Unfinned length in between if required)	1m to 10m



### Additional Services

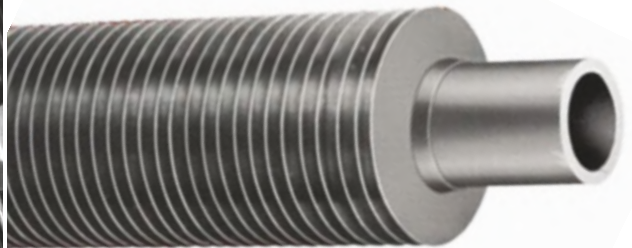
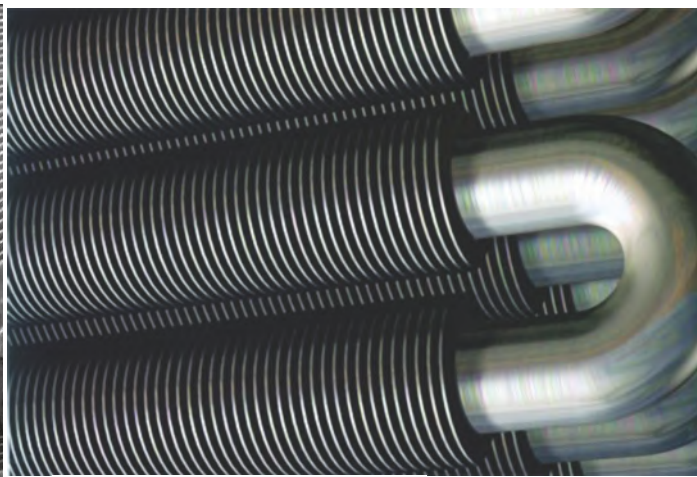
- Tube End Cold Bending and Stress Relieving
- Edge Preparation







# CIRCULAR FINNED TUBES



Maxenergy Equipments Pvt. Ltd., an associate of M.E Energy Pvt. Ltd., offers H, HH and spirally wound circular finned tubes. Applications are all types of Water Tube Boilers, Economisers and other thermal equipments. Finnings is done in one of the fastest machine, conforming to exact specifications.

### Additional Services

- Tube End Cold Bending and Stress Relieving
- Edge Preparation

### Specifications

Type	Circular, Tension Wound Crimped or Uncrimped Fins
Fin Sizes (mm)	As per Customer Specifications
Tube Sizes (mm)	25.4 OD - 50.8 OD
Fins Density (Fins / Meter)	@ 300 max rounds (8 rounds in 1")
Fin & Tube Material	Carbon Steel, Alloy Steel and Stainless Steel
Tube Length (m) (Unfinned length in between if required)	1m to 10m



## Maxenergy Equipments Pvt. Ltd.

3, Radhe Building, Near Orchid School, Xpress Carnook Lane, Balewadi, Pune - 411 045  
Email: sales@maxenergy.in | mepl@meenergy.com | Mob.: +91 9623442927  
CIN No. U29299PN2006PTC021937 01/02/2006 • GST NO.: 27AAECM7668K1ZT